

Fall in Love with Learning

OCTOBER 3, 2022



FINS UP WITH MRS. FINNEGAN

Can you believe the first nine weeks is almost over?

The month of October is full of exciting events with some events for everyone in the family to participate in and enjoy. Please be sure to check out our "Mark Your Calendar" section for important dates, reminders, and activities.

October will be all about **ACTIVENESS**. We will be discussing what it means to be active in school, at home, and around the community.

Students have also been learning about their "ACES"... positive adults in their lives who make a difference. There are four types of ACES...The Ace of Hearts, The Ace of Spades, The Ace of Clubs, and the Ace of Diamonds. Check out the thinking map challenges at the end of the newsletter to encourage your child to make connections about those who make a difference in his/her life.

Please see our Out-of-Field teacher letter below and under portal messages on FOCUS.

Thank you,
Rachel Finnegan

MARK YOUR CALENDAR

October 3rd - Schoolstore.com Fundraiser Ends

October 3rd - PTA Grants DUE
October 5th - No School
October 6th - Candy donations begin for Trunk or Treat
October 7th - Student of the Month and FSA Perfect Score Celebration
October 8th - School Choice Expo at IRSC Mueller Center from 11a-2p
October 8th - Shark Singers Performance at 1PM at the Mueller Center
October 10th - Quarter 1 Ends
October 13th - PTA Meeting at 5:30p
October 14th - PBIS Quarter 1 Celebration (recess)
October 15th - United Way Day of Caring, Beachland project will begin at 9a
October 20th - Trunk or Treat from 6:15-7:45p in our bus loop
October 21st - School Advisory Council (SAC) at 8AM
October 24th - Casual for Cause Day \$1- Youth Sailing Foundation -
October 27th - Fall Colors/Shirts Day (15 surf) and Conference Night 4-7p
October 28th - No School
October 31st - No School, Happy Halloween
November 1st - Student of the Month celebration

SOME OCTOBER EVENTS!



JOIN US AT THE INDIAN RIVER STATE COLLEGE, MUELLER CAMPUS FOR THE

SDIRC CHOICE & COMMUNITY EXTRAVAGANZA

Saturday, October 8
11:00 am - 2:00 pm

FREE EVENT FOR FAMILIES
HEAR ABOUT OUR CHOICE PROGRAMS
LEARN ABOUT OUR COMMUNITY PARTNERSHIPS
SHUTTLE SITES AT GYAC & FELLSMERE ELEMENTARY

Hands-on Experiences

Meet our School Teams

Break out sessions

Free Face Painting

STRONGER TOGETHER SDIRC



SATURDAY, OCTOBER 15TH

Signup to beautify and restore the parking lot flagpole area in our visitor parking lot from 9-12 for United Way's Day of Caring event.



THURSDAY, OCTOBER 27TH

Fall colors/festive shirts day for 15 SURF. Students can wear fall/Halloween/autumn colors and dress down. No costumes.



THURSDAY, OCTOBER 27TH

Conference night is scheduled from 4-7 on October 27th. More information will be sent home from your child's teacher regarding additional dates and times.

OUT-OF-FIELD TEACHERS AT BEACHLAND ELEMENTARY

NOTIFICATION OF PARENTS REGARDING OUT-OF-FIELD TEACHERS

September 26, 2022

Included in this memo is a list of teachers or long-term substitute teachers at Beachland Elementary School who have been reported as teaching out-of-field as required by Section 1012.42 of Florida Statute. Those teaching out-of-field are qualified to teach; however, all or part of their teaching assignment is not covered by their current certification. Individuals teaching out-of-field are required to complete additional coursework or testing until the coverage/endorsement is added to their certificate. Should you have any questions about these requirements, please call the school or Adalia Medina-Graham, Certification Analyst (772-564-3116).

Teacher:	Course:	Area of Out-of-Field Assignment:
Ellen Browning	ESE K-12, EARTH SPACE 6-12	ELEMENTARY EDUCATION
Connaughton, Eden	PRE-K/PRIMARY	ESOL
Emma, Veronica	ELEMENTARY ED	ESOL
Fass, Kenneth	ESE K-12	ELEMENTARY EDUCATION
Morse, Debra	GIFTED	GIFTED

AVISO PARA LOS PADRES SOBRE MAESTROS "FUERA DEL AREA"

September 26, 2022

Incluido en este aviso se encuentra una lista de maestros o maestros sustitutos a largo plazo en la escuela Beachland Elementary School quienes han sido reportados como "fuera de área" como se requiere en Sección 1012.42 de Estatuto de Florida. Esto significa que los maestros están calificados para enseñar y tienen su certificado sin embargo les hace falta completar algunos requerimientos que solo aplican a su asignado trabajo de enseñanza. Estos individuos que están enseñado "fuera de su área" requieren completar un curso adicional o tomar un examen para cumplir con los requerimientos. Si Ud. tiene preguntas sobre los requerimientos favor de hablar con la escuela o Adalia Medina-Graham, Analista de Certificación (772) 564-3116.

Maestro (a):	Curso:	Fuera de Área en:
Ellen Browning	ESE K-12, EARTH SPACE 6-12	ELEMENTARY EDUCATION
Connaughton, Eden	PRE-K/PRIMARY	ESOL
Emma, Veronica	ELEMENTARY ED	ESOL
Fass, Kenneth	ESE K-12	ELEMENTARY EDUCATION
Morse, Debra	GIFTED	GIFTED

MEET OUR NEW SCHOOL COUNSELOR

Mrs. Abdo is our new school counselor. She has a Bachelor of Science degree in General Psychology with a minor in education and a minor in business. She has worked as a school counselor as well as a college and career readiness coordinator. According to her, "School counselors are relationship builders. They are the people that are able to look at the big picture and reduce that picture to small achievable goals that result in BIG POSITIVE changes in school." Mrs. Abdo is available to students before and during school. We are excited to have Mrs. Abdo ride the wave of success with us.

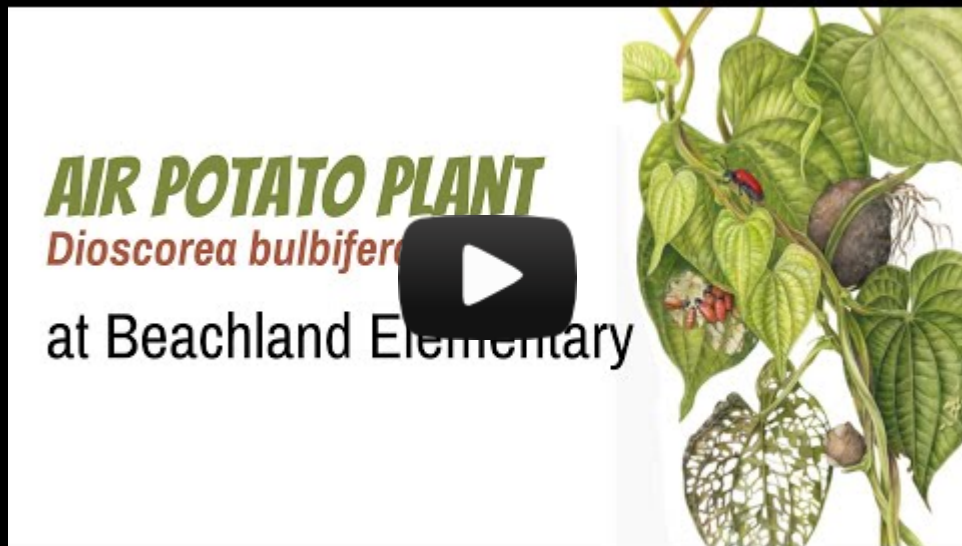


AIR POTATO VINE LESSONS

Over the summer, the School District of Indian River County's Physical Plant worked with the Florida Department of Agriculture and Consumer Services to make efforts to control this noxious weed, the air potato vine. In an attempt to control the vine, air potato beetles were released as an alternative solution, than complete eradication. We are fortunate to work with the FDACS and their beetle program. Students will be learning about invasive species during science connected to grade level standards and learn to apply vocabulary words like invasive, eradicate, and noxious.



The Potato Plant at Beachland Elementary!



STEAM SPOTLIGHT

THIRD GRADE STEAM LESSON

Students learned about weather hazards. They collected weather data in the form of temperature, air speed, and precipitation. They learned about soil absorption. Then they collaborated and created a design to prevent a flood in a garden. Students were allowed to test and redesign and test again. Let me know if you received the picture.



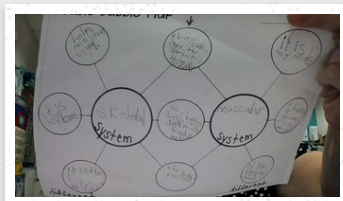
GRADE LEVEL SPOTLIGHTS

During the month of September, students were engaged in real-world problem solving and comparing and contrasting.

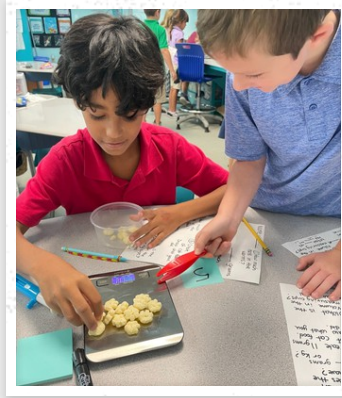


MRS. BROTHERS' AND MISS LORANCE'S FIRST GRADERS

All first graders completed a culminating activity about the human body. Students created a double bubble thinking map to compare and contrast two systems. They also wrote an independent informational paragraph about a body system.

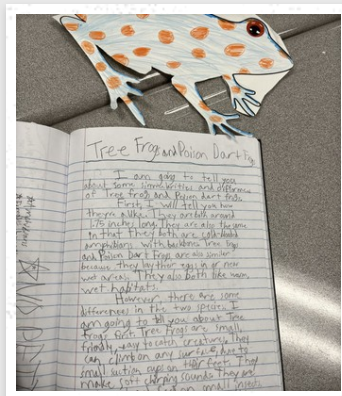


1ST GRADE

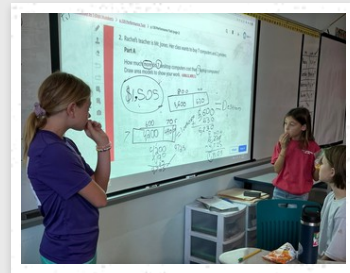


MRS. MCDANIEL'S 3RD GRADERS

In science, our third graders are learning about mass and volume. We solved real world problems by pretending to be Veterinarians taking care of animals! We needed to measure the mass of each animals' food and find the volume of their water dishes and medicine! We learned the importance of accurate measurements in the real world!



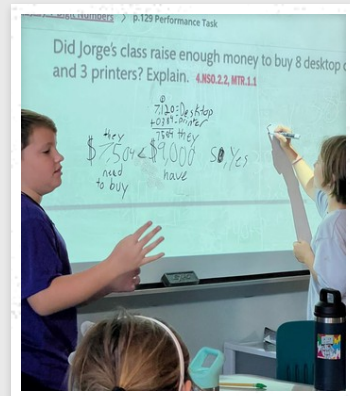
3RD GRADE



MRS. MASTERSON'S 4TH GRADERS

Students were working in groups together on several performance tasks in math using different multi-digit multiplication strategies.

Students are using the standard algorithm for multidigit multiplication to solve their performance task. Students are demonstrating how to use the area model to solve multi-digit multiplication problems. They were also showing how they used addition and subtraction to show how much more money it would cost to buy 7 laptops than 7 desktops.



4TH GRADE

OCTOBER'S CASUAL FOR A CAUSE – YOUTH SAILING FOUNDATION

For a suggested donation of \$1, choose a friend, friends, teacher, and/or staff member to match. How many duplicate outfits will we see?

CASUAL FOR A CAUSE October 24th

**DUPLICATE DAY &
MAKE A DONATION (\$1) TO BENEFIT THE**

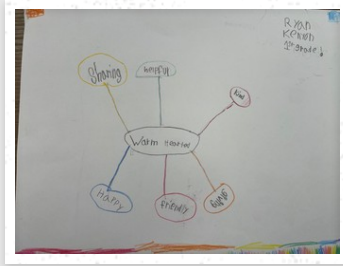


Founded in 2009 by Charlie & Chris Pope and Varoujan "Pops" Karentz, Youth Sailing Foundation of Indian River County is a not-for-profit organization offering free sailing instruction to the children of IRC. We believe sailing is an adventure for a lifetime. While learning to sail children learn life skills that will endure. Sailing challenges and builds confidence by taking children outdoors, out of their comfort zone, and into a world of wind and water. YSF's success is measured in the competence, discipline, responsibility and leadership skills that blossom in our students.

SEPTEMBER HIGHLIGHTS

In September, students were able to wear hats on Monday, September 19th for The Hope for Families Center and raised close to \$100.

Also, checkout last month's thinking maps for ideas for October's challenge!



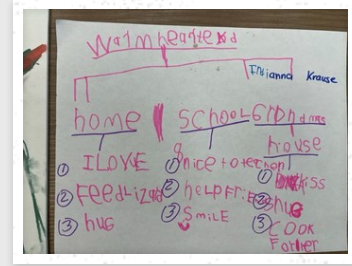
RYAN, 1ST GRADE

Ryan describes how to be warm-hearted with specific adjectives and actions.



OWEN, K

Love how Owen started his thinking map with a heart in the center to describe warm-heartedness by being nice and friendly.



INDIANNA, K

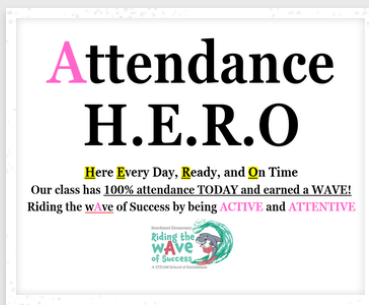
Indianna did an amazing job classifying ways she is warm-hearted at home, school, and grandma's house!

CREATE A THINKING MAP FOR OCTOBER

This month I encourage your child to create a thinking map to CLASSIFY what it means to be active or the adults (ACES) who are active in your life. Thinking maps are due to Mrs. Finnegan by Thursday, October 27th. Checkout last month's submissions!

<p>Circle Map</p> <p>FOR DEFINING</p>	<p>Tree Map</p> <p>FOR CLASSIFYING</p>	<p>Bubble Map</p> <p>FOR DESCRIBING</p>	<p>Double Bubble Map</p> <p>FOR COMPARING</p>
<p>Flow Map</p> <p>FOR SEQUENCING</p>	<p>Multi-Flow Map</p> <p>FOR CAUSE AND EFFECT</p>	<p>Brace Map</p> <p>WHOLE TO PARTS</p>	<p>Bridge Map</p> <p>Relating Factor</p> <p>FOR ANALOGIES</p>

ATTENDANCE... EVERY DAY MATTERS!



We are excited to announce our TOP grade levels for the month who reached 95% or higher...2nd grade at 95.3%, 4th grade at 95.8%, and Kindergarten at 96%.

All students with perfect attendance will for the first quarter will receive a pop-it keychain and certificate on Monday, October 10th!

Also a shoutout to our teachers and staff with their 97.3% attendance rate...tied in first place with Gifford Middle and Pelican Island Elementary!

SCHOOL WIDE EXPECTATIONS

RIDING THE WAVE OF SUCCESS

At Beachland Elementary, we are riding the WAVE of success by being warm-hearted, active and attentive, vigilant and enthusiastic for learning! Students follow our WAVE expectations in all areas on our campus. Students can earn individual "SURF" (pink tickets) and together class "WAVES" (blue squares). Surf and waves can be turned in for special rewards. Monthly, students can turn in surf to participate in different dress down days, turn in 50 surf for a gold coin for our book vending machine, and more! Waves are celebrated as homeroom classes. For the month of October, we will be focusing on what it means to be active. Quarterly students will be celebrated who do not have office referrals and no more than three classroom incident referrals. Be on the lookout for our FIN-TASTIC calls home from a teacher or staff member!



School Expectations

Warm-hearted

Active & Attentive

Vigilant

Enthusiastic for Learning

Respect each other
and other's property

Be Kind

Raise your hand

Listen

Participate

Follow directions

Keep hands, feet,
and objects to self

Be Safe

Excited for challenges

Stay Positive

Ride the WAVE of SUCCESS following our school expectations to earn individual SURF and class WAVES.



Beachland Elementary

Riding the
WAVE
of Success

A STEAM School of Enrichment



BEACHLAND ELEMENTARY SCHOOL

Facebook @BeachlandSharks

Learn more about Beachland on our school website, Facebook, and/or Twitter.

3350 Indian River Drive East, V...

rachel.finnegan@indianriversc...

772-564-3300

bes.indianriverschools.org/